

# Museum of Craft and Design

# MOTO SELF PORTRAITS



## PROJECT DESCRIPTION

Our current exhibition, [MOTO MMXX](#) points out that many machines are based on the human body. [Kraus Motor Co.](#) goes as far as noting motorcycles and their wear and tear as “unified expression of man and machine.” But what if instead of building a machine by hand, like [Sosa Metalworks](#), we instead imagined *ourselves* out of machines?

## RECOMMENDED AGE/SKILL LEVEL:

Recommended for aged 5 and up with adult supervision.

## MATERIALS

- [Motorcycle diagram](#) or [simplified parts template](#) (print or trace)
- Construction Paper
- Scissors
- Glue
- Pencil
- **OPTIONAL:**
  - Marker(s)
  - Magazines
  - Digital design programs



## INSTRUCTIONS

- Refer to the [MOTO MMXX](#) 360° exhibition or the motorcycle diagram linked above.
- Identify individual parts of motorcycles that you may find interesting.
  - Do any of these parts remind you of the human body?



# MOTO SELF PORTRAITS

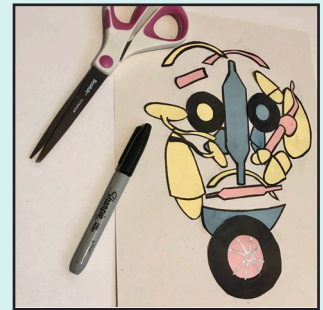
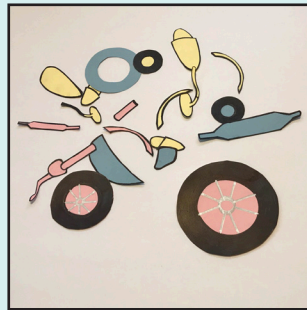
- Download and print or trace/draw the motorcycle parts.

- Try to include one or more of the following parts:

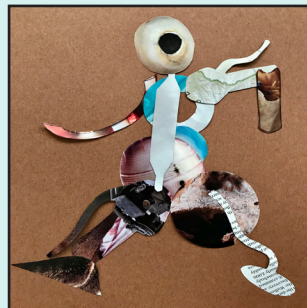
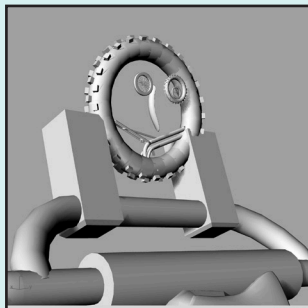
- mufflers
- fuel tanks
- hand brakes
- tail lights
- tires
- Fenders
- footpegs
- Mirrors



- Cut the pieces out.
- *OPTIONAL:* Play with scale by making different sized versions of the same parts.
- For extra flair, use a marker to draw details on the parts, such as the tread or the rims on the tires.
- Mix and match these parts in order to create a face or body.



- Glue down the parts in their final configuration
- *OPTIONAL:* What other mediums could you employ to make a moto self portrait?
  - Our last few examples were made in [Rhino 3D](#) and magazine collage.
  - Free digital template bike is available [here](#).



*Stay tuned for future projects that play with digital design!*

Museum of Craft and Design

# MOTO SELF PORTRAITS

## ADDITIONAL RESOURCES

### CONNECT SOCIALLY AND LEARN MORE

**Facebook & Instagram:** @MuseumofCraftandDesign

**Twitter** @SF\_MCD

**Share your project!** Post and tag #MCDatHome

**Related materials:** Find inspiration in the designs of builders [Sosa Metalworks](#) and [Kraus Motor Co.](#)