

# MUSEUM OF CRAFT AND DESIGN SOCIAL STORY



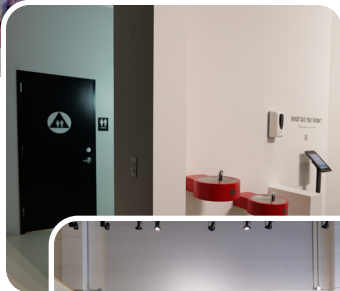
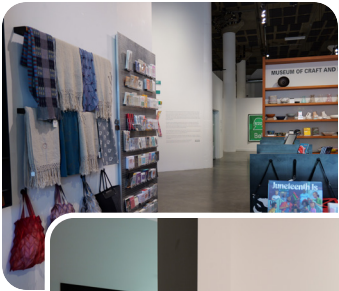
*She Bends: Neon as Soulcraft*



I am going to the Museum of Craft and Design. The museum is in the Dogpatch neighborhood on 3rd Street, a busy street where I will hear cars on the road, the sound of Muni Metro trains going by, and see other people passing by on the sidewalk. Before entering the museum, I can take a break in the parklet which has a long bench to sit on, as well as backless counter seats, immediately opposite the museum's glass double doors. When I'm ready to enter the museum, I will pull open the glass doors and climb five steps to the front desk or use the wheelchair lift to the left of the stairs.



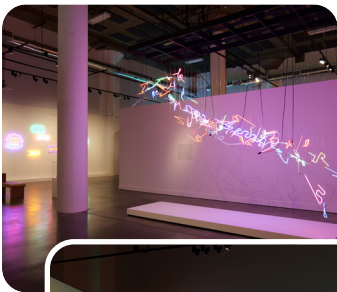
At the front desk, I will see a member of the museum store team and/or a gallery ambassador who will welcome me to the museum and can answer any questions I have. I will need to check in at the front desk. At the desk I can purchase an admission ticket, or be admitted without one for a free program. I can also ask to use noise-reduction earmuffs, a weighted scarf, and earplugs during my visit. I will have to return the headphones and scarf when I leave, but the earplugs are mine to keep.



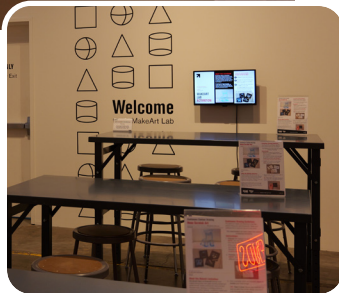
I can use any one of the single-stall bathrooms a few feet forward and to the left of the front desk, by the water fountains. I can also shop in the museum store just behind the front desk and pay for items there. When I'm ready to explore the exhibitions, I will head past the museum store and into the galleries.



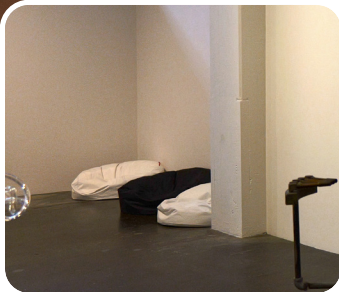
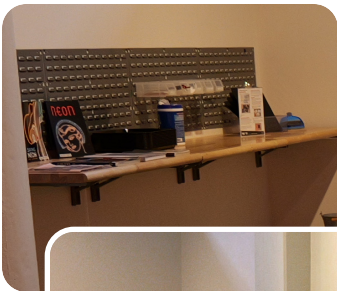
Exhibitions at the Museum of Craft and Design change every 4-5 months. Today, I will explore *She Bends: Neon as Soulcraft*. A video plays at low volume in the first room of the gallery, but if I prefer a quieter experience, I can get noise-canceling headphones or earplugs from the front desk. I can sit on a bench to watch the video, which is six minutes long. The neon glows brightly throughout the galleries, but if I prefer to see the exhibit more dimly lit, I can wear my own sunglasses.



I will see multi-colored neon artworks throughout the galleries, read text displayed on gallery walls, and see objects in display cases. Many of these objects were used by the artists to create the neon signs. Some of the neon artworks have benches in front of them. I can sit at these benches if I want to look at the art for a long time, or if I'm feeling tired. I will help protect the art by looking at and not touching it and keeping at least two feet of space between myself and the art. If I have any questions, I can ask a Gallery Ambassador who helps keep the art safe and is here to help me.



At the back of the museum, I will find the MakeArt Lab. I can make my own art inspired by the exhibitions I just saw. At the front of the MakeArt Lab is a wooden table filled with tools used in neon bending studios. These tools are for display only, so I will look at the objects and read their accompanying labels without touching them. Further into the MakeArt Lab, there is another wooden table mounted to the wall. This table will have black trays and materials in plastic cubbies mounted on the wall above. Against the back wall, there are three metal tables and backless stools to use to sit on after I choose my materials. There are also signs on the table and a monitor against the wall that show the instructions for the project. I can follow along with the project or I can make something different. After I'm done making art, I will bring reusable materials back to their cubby, stack my tray, and put any garbage in the trash can. When available, I can also take home a MakeArt Kit. I won't open it in the museum, but I can take it home to make the project there and share it with friends and family.



The MakeArt Lab is part of the museum. On the table next to the art supplies is a selection of books that I can look through. On the opposite wall are three bean bag chairs where I can sit and enjoy the book I chose. I can read for however long I want, but when I'm finished I will return the book to the table where I found it.



When I'm ready to leave the museum, I will go back through the galleries, pass by the store and bathrooms again—where I can stop to shop or use the restroom—to the main door. If I borrowed headphones or a weighted scarf, I return them to the front desk before heading back out onto 3rd Street.